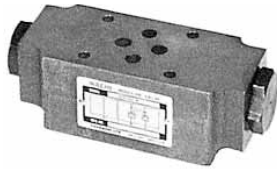


OCP Series



PILOT OPERATED CHECK MODULAR VALVE

● 50~200ℓ/min (13.2~52.9 gpm)
210, 250 kgf/cm² (3000, 3571 psi)

Features

1. Holds actuator in place when directional valve is centered. Prevents drifting of loads.
2. The maximum operating pressure of this is 210, 250 kgf/cm² (3000, 3571 psi).

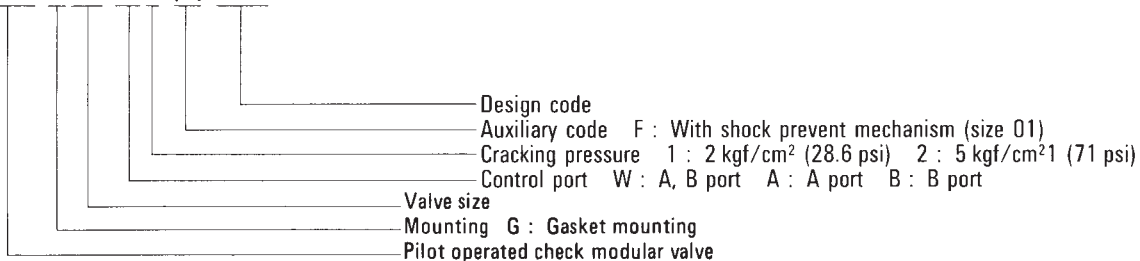
Specification

Model	Valve size	Max. Operating Pressure kgf/cm ² (psi)	Max Flow ℓ/min (gpm)	Cracking Pressure kgf/cm ² (psi)	Section Area Ratio			Weight kgf(lbs)
					Pilot Piston	Seat Area of Check	Seat Area of Needle	
OCP-G01-W1-21 W2	1/8	250 (3571)	50 (13.2)	2 (29) 5 (71)	1	0.37	-	1.2 (2.6)
OCP-G01-A1-21 A2				2 (29) 5 (71)				
OCP-G01-B1-21 B2				2 (29) 5 (71)				
OCP-G01-W1-F-21 W2				1	0.51	0.06	2 (29) 5 (71)	
OCP-G01-A1-F-21 A2							2 (29) 5 (71)	
OCP-G01-B1-F-21 B2							2 (29) 5 (71)	
OCP-G03-W1-J50 A1 B1	3/8	250 (3571)	100 (26.5)	2 (29)	1	0.49	0.07	3.6 (7.9)
OCP-G06-W1-11 A1 B1	3/4	210 (3000)	200 (52.9)	2 (29)	1	0.47	0.07	12.6 (28)
								12.2 (27)

Note: 1. OCP-G03-※2-J50 (cracking pressure 71 psi) is also available.
2. As for size 03 and 06, with shock prevent mechanism is standard. However, without shock prevent mechanism is also available.

Model Code

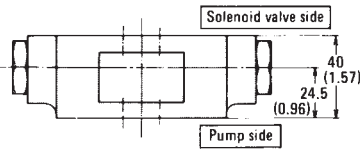
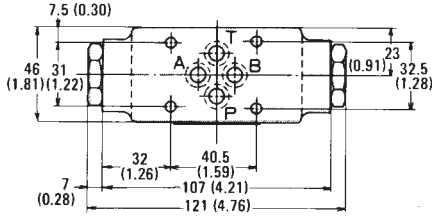
OCP-G03-W1-(F)-J50



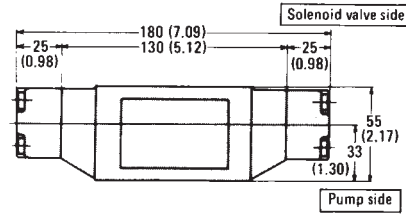
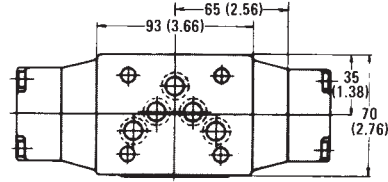
OCP Series

Installation Dimensions mm (inch)

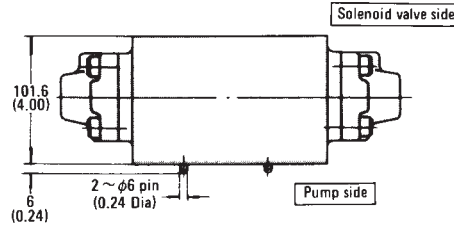
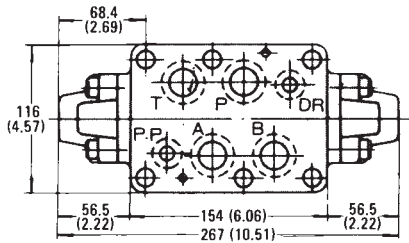
OCP-G01- ※ ※ -(F)-21



OCP-G03- ※ 1-J50



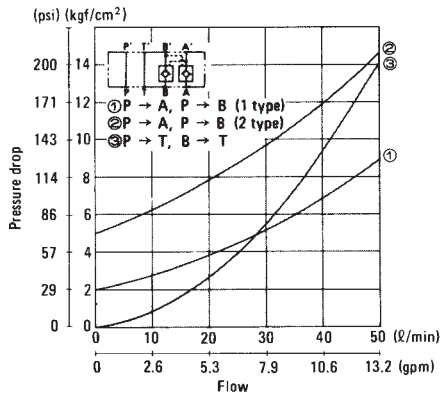
OCP-G06- ※ 1-11



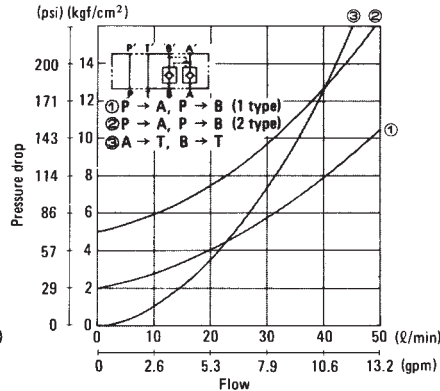
Performance Curve

Pressure Drop Characteristics

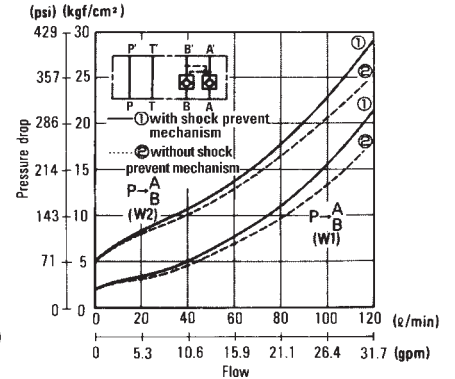
OCP-G01-W ※ -21



OCP-G01-W ※ -F-21



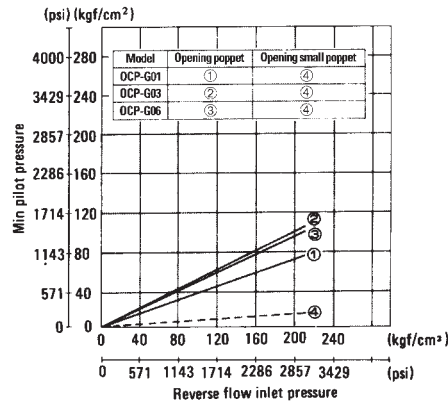
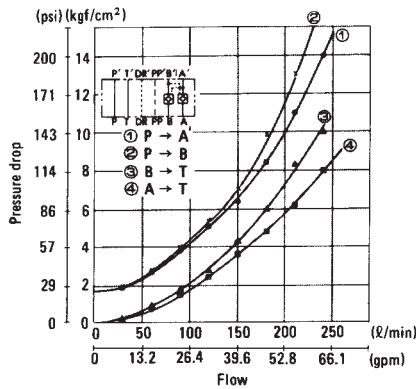
OCP-G03-W1-J50



OCP Series

OCP-G06-W1-11

Min. Pilot Pressure Characteristics

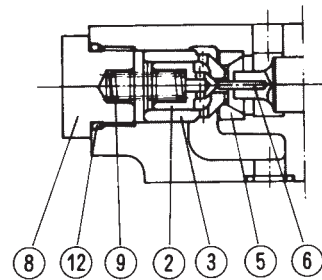
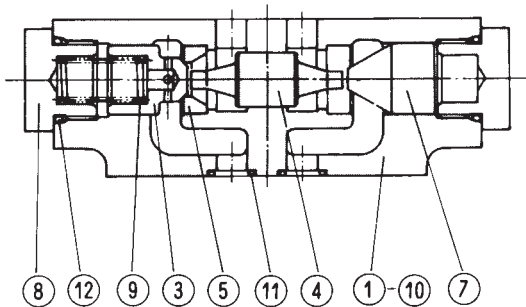


Cross Section Drawing

Viscosity of hydraulic fluid 32cSt.

OCP-G01-A※-21

OCP-G01-A※-F-21



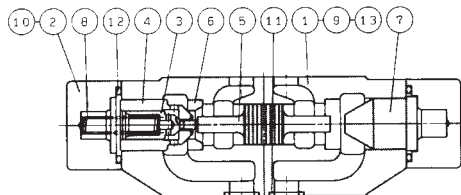
List of Seals

No.	Name of part	Number of part	Q'ty
11	O-ring	RO-P9-90	4
12	O-ring	RO-P18-90	2

No.	Name of part
1	Body
2	Poppet
3	Poppet
4	Piston
5	Seat
6	Rod
7	Bushing
8	Guide
9	Spring
10	Plate
11	O-ring
12	O-ring

OCP-G03-A※-J50

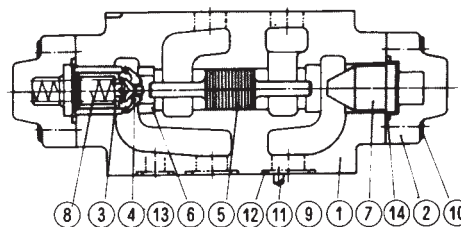
OCP-G06-A1-11



No.	Name of part
1	Body
2	Cover
3	Poppet
4	Poppet
5	Piston
6	Seat
7	Bushing
8	Spring
9	Plate
10	Screw
11	O-ring
12	O-ring
13	Pin

List of Seals

No.	Name of part	Number of part	Q'ty
11	O-ring	ROA-014-90	5
12	O-ring	RO-P29-90	2



No.	Name of part
1	Body
2	Cover
3	Poppet
4	Poppet
5	Piston
6	Seat
7	Bushing
8	Spring
9	Plate
10	Screw
11	Pin
12	O-ring
13	O-ring
14	O-ring

List of Seals

No.	Name of part	Number of part	Q'ty
12	O-ring	RO-P28-90	4
13	O-ring	RO-P20-90	2
14	O-ring	RO-G35-90	2