

OQ Series



SEQUENCE MODULAR VALVE

- 40~120ℓ/min (10.6~31.7 gpm)
2.5~210 kgf/cm² (36~3000 psi)

Features

1. Used for the sequential operation of an actuator and holding circuit pressure.
2. The pressure can be adjusted in a wide range of 2.5 ~ 210 kgf/cm² (36 ~ 3000 psi).
3. The maximum operating pressure is 250 kgf/cm² (3571 psi), 210 kgf/cm² (3000 psi)

Specification

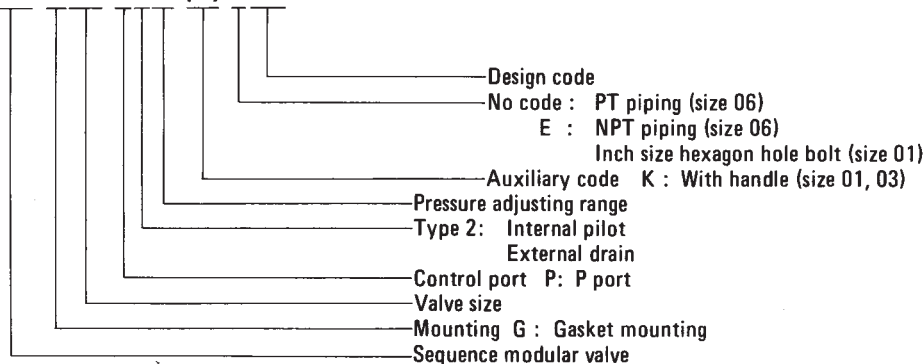
Model	Valve size	Max. Operating Pressure kgf/cm ² (psi)	Max Flow ℓ/min (gpm)	Pressure Adjusting Range kgf/cm ² (psi)	Weight kgf (lb)
OQ-G01-P21-(E)20 P23	1/8	250 (3571)	40 (10.6)	8 ~ 70 (114 ~ 1000) 35 ~ 210 (500 ~ 3000)	1.1 (2.4)
OQ-G03-P2A-J50 P2C P2E	3/8	250 (3571)	80 (21.2)	2.5 ~ 8.5 (36 ~ 121) 8.5 ~ 35 (121 ~ 500) 35 ~ 140(500 ~ 2000)	3.5 (7.7)
OQ-G06-P2A-(E)11 P2B P2C P2D P2E	3/4	210 (3000)	120 (31.7)	2.5 ~ 8.5(36 ~ 121) 5 ~ 17.5(71 ~ 250) 8.5 ~ 35 (121 ~ 500) 17.5 ~ 70(250 ~ 1000) 35 ~ 140(500 ~ 2000)	11.1 (24.5)

Notes

1. The pressure adjusting range is expressed according to the range of cracking pressure.
2. Be sure to connect the drain piping directly to the oil reservoir and keep the back pressure at the drain port as low as possible.
3. Mount the valve directly on the subplate or on the manifold.
4. When using more than two sequence valves in a system, maintain a minimum of 10 kgf/cm² (143 psi) differential between valves.

Model Code

OQ-G03-P2A-(K)-J50

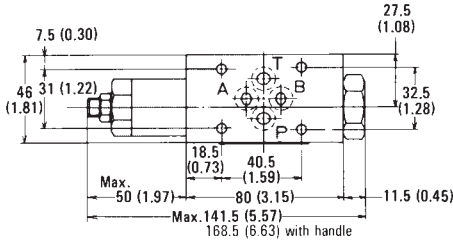


OQ Series

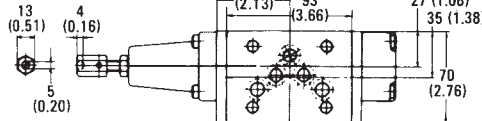
Installation Dimensions

mm (inch)

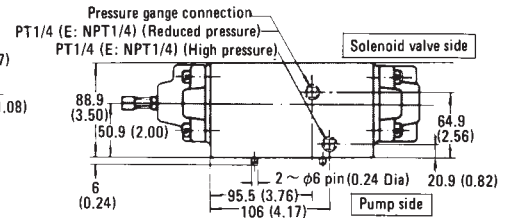
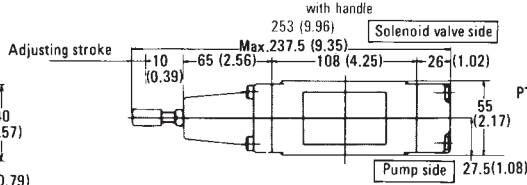
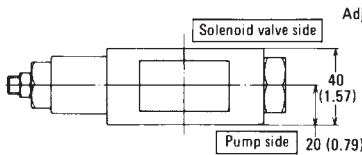
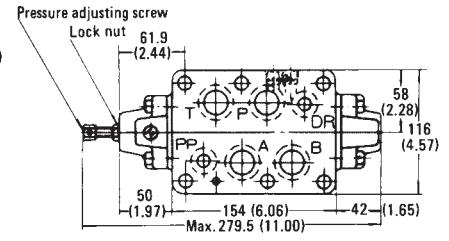
OQ-G01-P2 ※-(E)20



OQ-G03-P2 ※-J50



OQ-G06-P2 ※-(E)11

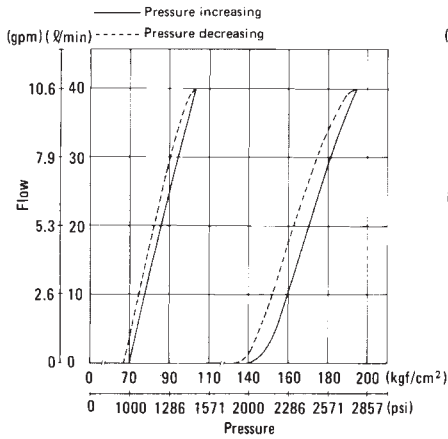


Note) Clockwise rotation of adjusting screw (both) increases pressure.
Counter-clockwise rotation decreases pressure.

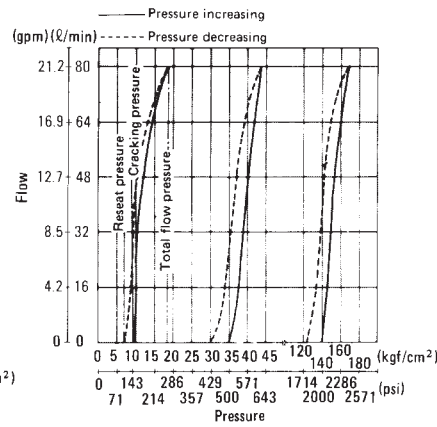
Performance Curve

Pressure-Flow Characteristics

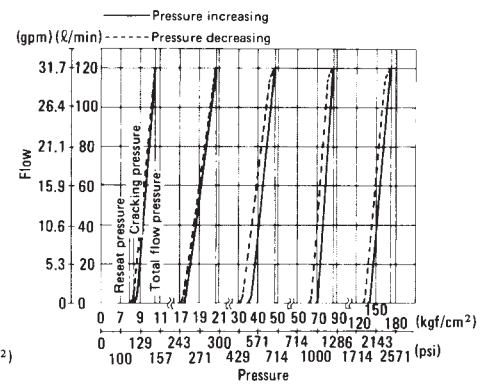
OQ-G01-P2 ※-(E)20



OQ-G03-P2 ※-J50

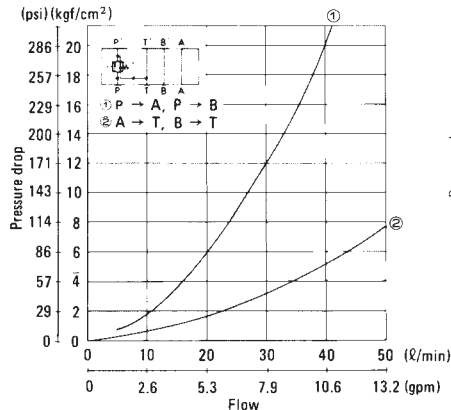


OQ-G06-P2 ※-(E)11

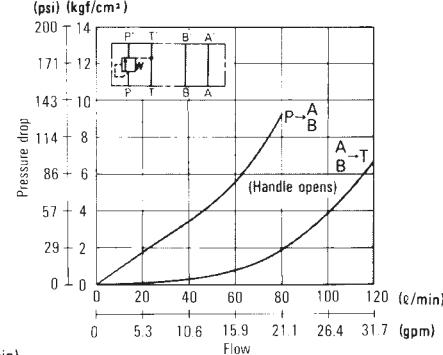


Pressure Drop Characteristics

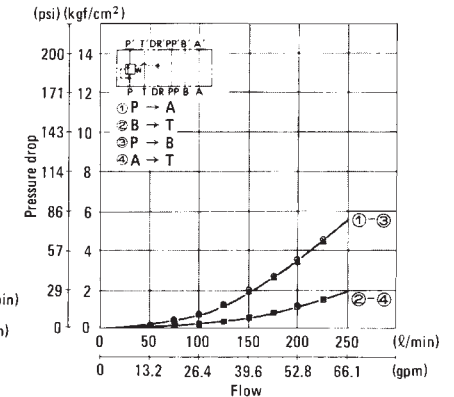
OQ-G01-P2 ※-(E)20



OQ-G03-P2 ※-J50



OQ-G06-P2 ※-(E)11



Viscosity of hydraulic fluid 32cSt.

OCQ Series



COUNTER BALANCE MODULAR VALVE

- 40~120ℓ/min (10.6~31.7 gpm)
2.5~140 kgf/cm² (36~2000 psi)

Features

1. This counter-balance modular valve is used for actuator back pressure control.
2. The operating pressure can be adjusted in a wide range from 2.5 (36) to 140 kgf/cm² (2000 psi).
3. The maximum operating pressure of this valve is 250 kgf/cm² (3571 psi), 210 kgf/cm² (3000 psi).

Specification

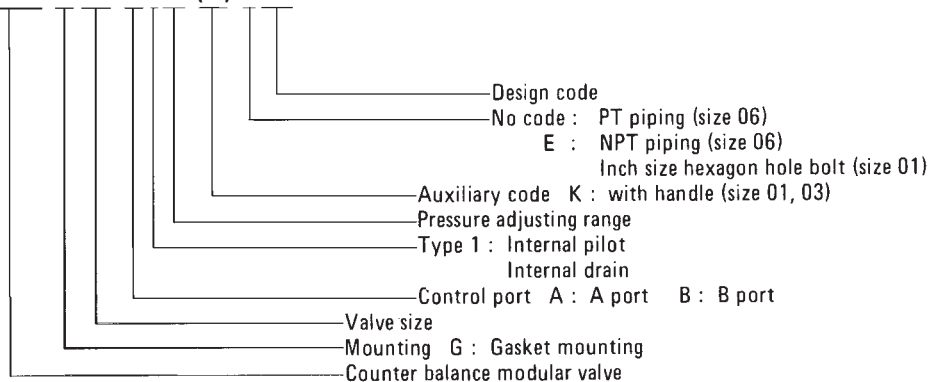
Model	Valve size	Max. Operating Pressure kgf/cm ² (psi)	Max Flow ℓ/min (gpm)	Pressure Adjusting Range kgf/cm ² (psi)	Weight kgf (lb)
OCQ-G01-A11-(E)20 A12	1/8	250 (3571)	40 (10.6)	8 ~ 70 (114 ~ 1000)	1.1 (2.4)
OCQ-G01-B11-(E)20 B12				35 ~ 140 (500 ~ 2000)	
OCQ-G03-A1A-J50 A1C A1E	3/8	250 (3571)	80 (21.2)	2.5 ~ 8.5 (36 ~ 121)	3.5 (7.7)
OCQ-G03-B1A-J50 B1C B1E				8.5 ~ 35 (121 ~ 500)	
OCQ-G06-A1A-(E)11 A1B A1C A1D A1E	3/4	210 (3000)	120 (31.7)	2.5 ~ 8.5 (36 ~ 121)	12.9 (28.4)
OCQ-G06-B1A-(E)11 B1B B1C B1D B1E				5 ~ 17.5 (71 ~ 250)	
				8.5 ~ 35 (121 ~ 500)	
				17.5 ~ 70 (250 ~ 1000)	
				35 ~ 140 (500 ~ 2000)	

Notes

1. The pressure adjusting range is expressed with the range of cracking pressure.
2. Be sure to connect the drain piping directly to the oil reservoir, and keep the back pressure as low as possible.

Model Code

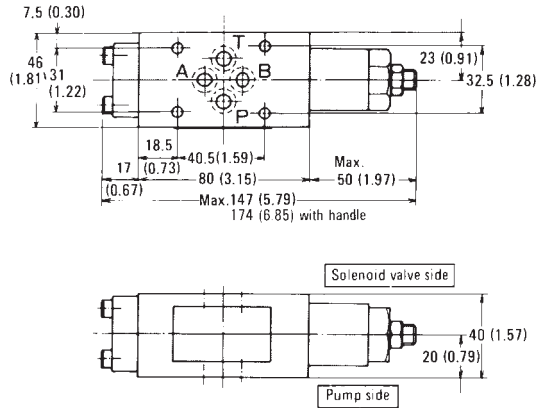
OCQ-G03-B1A-(K)-J50



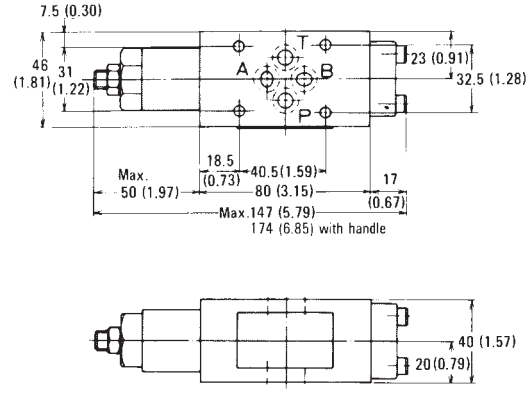
OCQ Series

Installation Dimensions mm (inch)

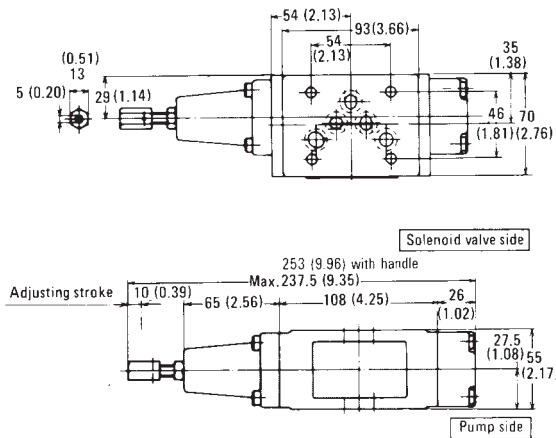
OCQ-G01-A1 ※ -(E)20



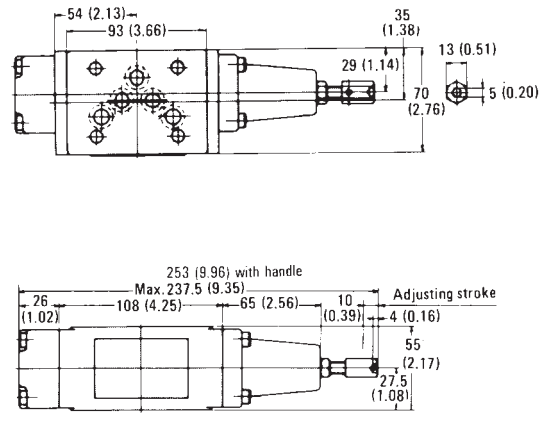
OCQ-G01-B1 ※ -(E)20



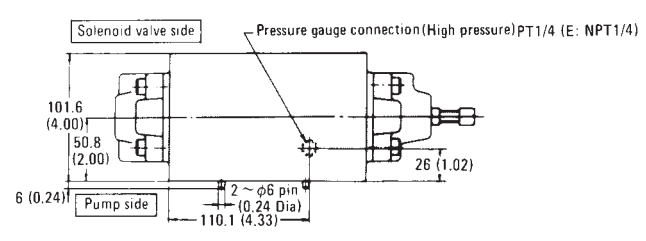
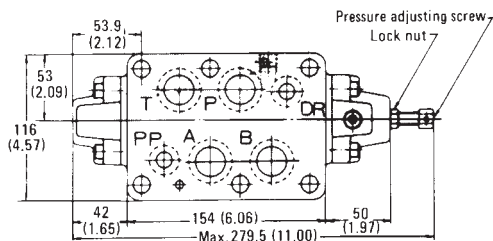
OCQ-G03-A1 ※ -J50



OCQ-G03-B1 ※ -J50



OCQ-G06-A1 B1 ※ -(E)11



Note) Clockwise rotation of adjusting screw (bolt) increases pressure. Counter-clockwise rotation decreases pressure.

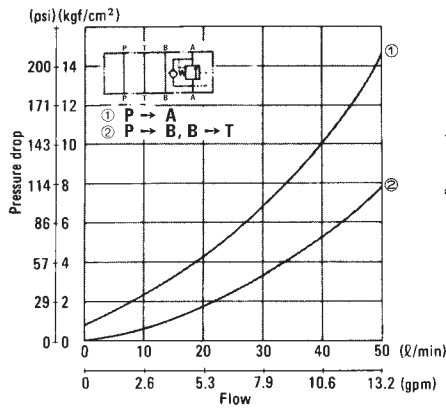
Modular Valves

OCQ Series

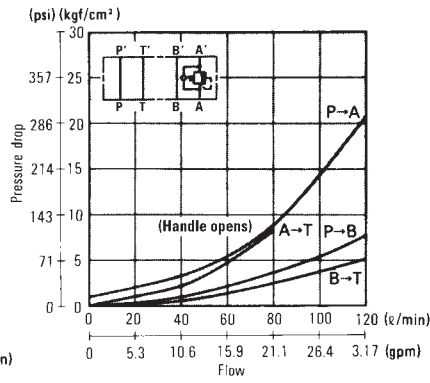
Performance Curve

Pressure Drop Characteristics

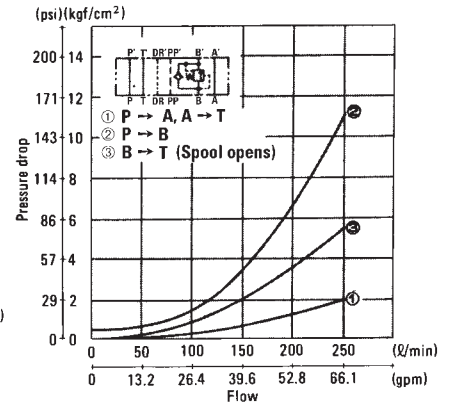
OCQ-G01-A1 ※ -(E)20



OCQ-G03-B1 ※ -J50

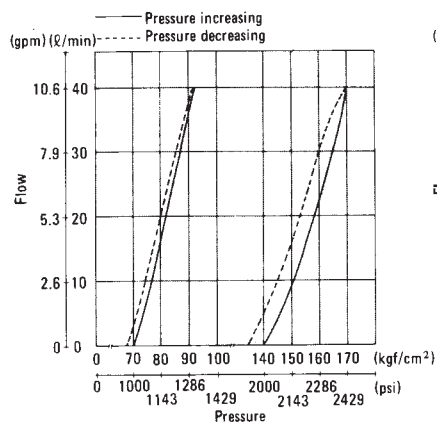


OCQ-G06-B1 ※ -(E)11

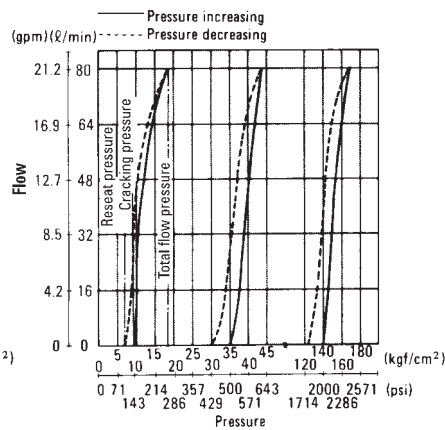


Pressure-Flow Characteristics

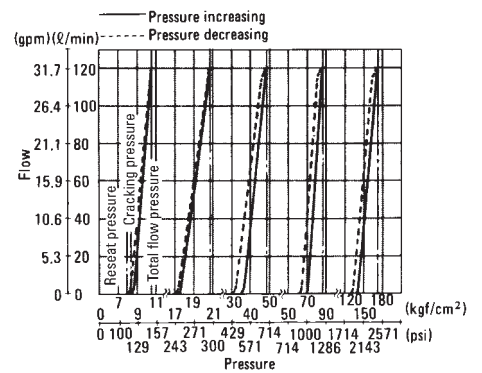
OCQ-G01-A1
B1 ※ -(E)20



OCQ-G03-A1
B1 ※ -J50



OCQ-G06-A1
B1 ※ -(E)11



Viscosity of hydraulic fluid 30cSt.