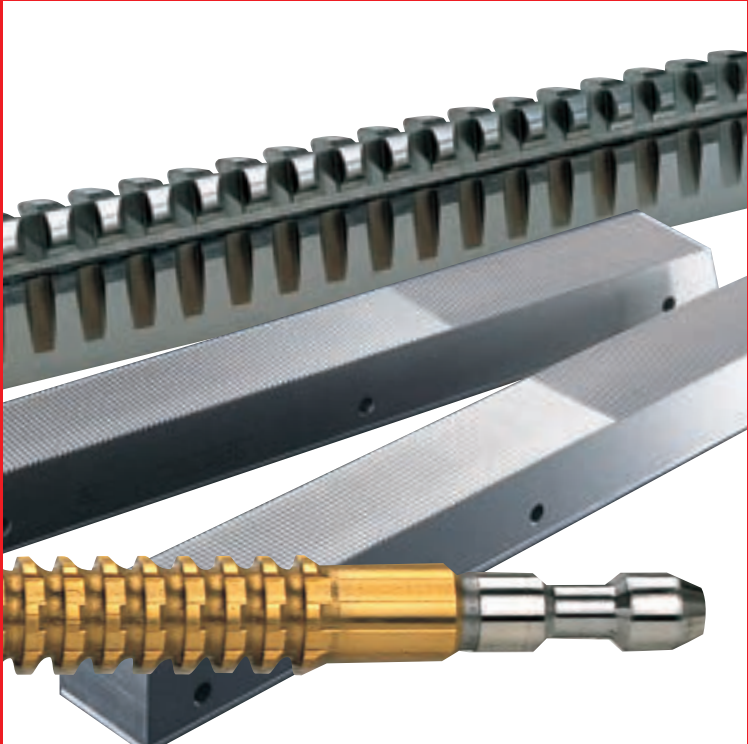


NACHI

GEAR CUTTING & ROUND TOOLS



GEAR CUTTING TOOLS

NACHI

HOB, SHAPER & SKIVING CUTTERS

Used for rough cutting gears - available in 1/2" to 12" diameters and from 3/4 to 96 pitch. All tools are manufactured fully ground and some in A and AA quality ranges. Advanced Nachi material and coating technology provides extended tool life.



ROTARY SHAVING CUTTERS

Shaving cutters are produced in sizes from 1" to 16 1/2" diameters. 1 to 32 pitch with face widths in excess of 4". These high-quality powdered metal tools are ground on Nachi built precision CNC grinders. CNC inspection certificates and charts are supplied with each tool.



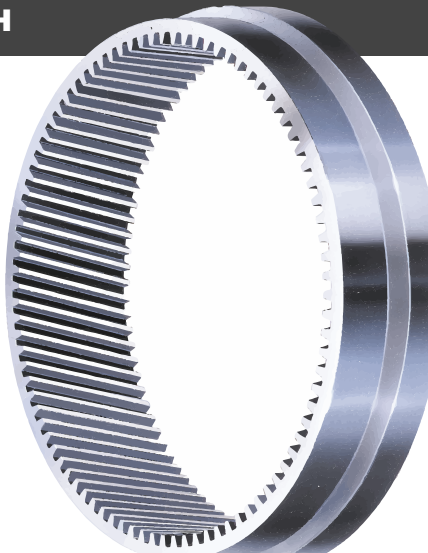
BROACH CUTTING TOOLS

Nachi offers a complete line of broaching tools for virtually every application in every market. These tools are manufactured to ultra precision tolerances. Styles include essentially all types of internal and external broaches produced anywhere in the world today. Broaches manufactured by Nachi offer versatility in both material types broached and geometrical achievement. Nachi's material and coating technologies provide extended tool life - reducing overall piece cost.



EX COATED BROACH

EX coat for broaching ensures consistent accuracy and improved wear resistance. Nachi provides long tool life with both water soluble and water immiscible cutting fluid.



ROLL FORMING RACKS

Rolling racks are manufactured on dedicated CNC equipment and tested on in-house Nachi rolling machines. Forming racks are available for thread, oil groove, and spline (helical and spur) applications.

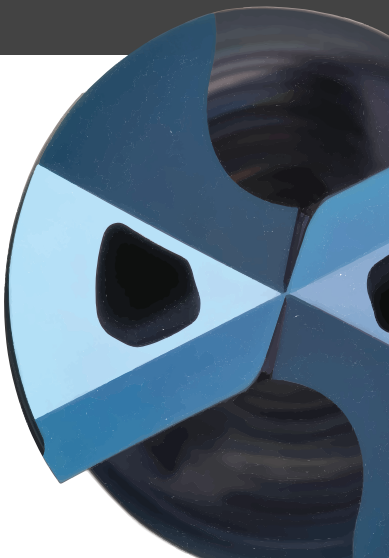


ROUND CUTTING TOOLS

NACHI

AQUA REVO DRILLS

Aqua REVO carbide drills are designed to improve all facets of drilling. Its unique design performs at a high level at various speeds and feeds in a wide range of materials. An all-new substrate, geometry, and coating provide long tool life, even at heavier feed rates. REVO is offered in solid carbide, coolant-thru carbide, and micro carbide options.



AQUA EX FLAT BOTTOM DRILLS

Flat bottom drills are available in a wide range premium performance styles and sizes, making Nachi the leading supplier in the market. Nachi flat bottom drills decrease process time, solve exit burr issue, and save on tooling cost thanks to their unique geometry and exclusive Aqua EX coating.



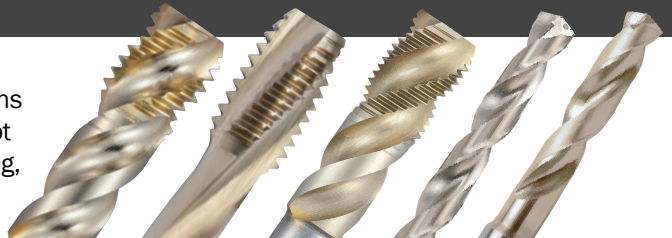
AQUA EX DEEP HOLE DRILLS

Designed to provide consistent, high-performance in mild, hardened, and stainless steels, as well as high-temp alloys; the unique J-shaped flute is designed to form small, easy to evacuate chips. Deep chip pockets, created by a double pass fluting process, provide optimized chip evacuation. Available in standard diameters up to 40XD and micro diameters up to 20XD in length.



SG DRILLS & TAPS

A high performance powdered HSCO tool line coated with Nachi's proprietary SG coating, SG drills and taps are a perfect fit for applications where carbide is not cost effective and general purpose HSS drills do not provide enough accuracy. SG taps deliver high flexibility, stable machining, and efficient chip evacuation in a wide range of materials.



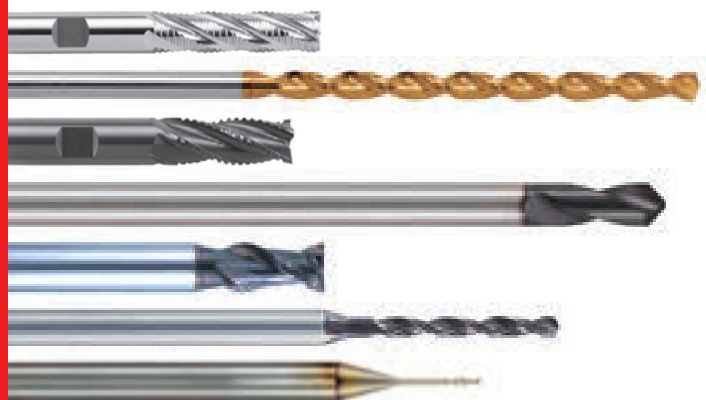
HIGH PERFORMANCE CARBIDE END MILLS

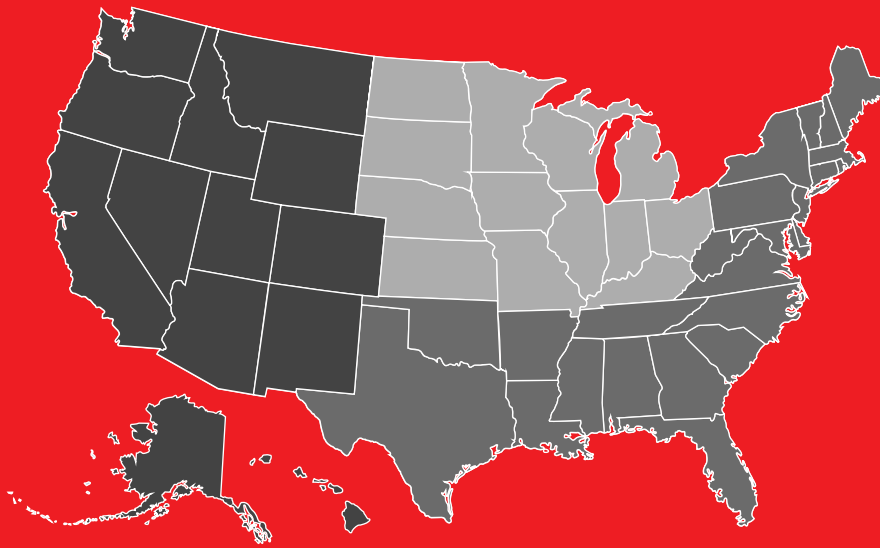
The Aqua V Mill series offers 4 and 5 flute options that are rated for a wide range of materials up to 45 HRC. The Aqua Hard Mill series is designed for materials of 45~70 HRC. The ALH Mill series is a 3 flute option specifically designed for aluminum - offering superior surface finish while decreasing aluminum adhesion on the cutting edge.



HSS & HSCO DRILLS, END MILLS & TAPS

Nachi offers a large variety of general purpose HSS and HSCO drills, end mills, and taps to suit any application.





SALES & SUPPORT - WEST

MICHAEL DECUIR	DISTRIBUTION SALES MANAGER	ALL STATES	(803) 984-9774
MARK SMITH	ADVANCED TOOLING COMPANY	AZ, ID, MT, OR, WA	(360) 951-3580
TAKASHI HIROMI	REGIONAL SALES	CA, NV	(310) 863-8649
CARY SCHLEGEL	REGIONAL SALES	CA, NV	(760) 562-2290

SALES & SUPPORT - MIDWEST

NICK LIEFFERS	REGIONAL SALES MANAGER	IA, IL, IN, KS, KY, MO, NE,	(248) 910-0354
DUSTIN PYKOLA	INTEGRATED TOOLING SOLUTIONS	MN, ND, SD, WI	(715) 579-7873
DAN REASONER	REASONER SALES SOLUTIONS	IA, KS, MO, NE	(515) 290-2782
MARTIN SEGAL	REGIONAL SALES	MI, OH	(313) 648-8814

SALES & SUPPORT - SOUTH & EAST

MICHAEL DECUIR	DISTRIBUTION SALES MANAGER	MS, NC, SC, VA (& ALL STATES)	(803) 984-9774
VALTER BANDO	CREATIVE MACHINING SOLUTIONS	FL	(551) 574-8333
STEVE KINION	TOOL WORKS, LLC	NC, SC, EASTERN TN	(704) 779-7282
BRAD MUTCHLER	REGIONAL SALES	AR, IL, MS, MO	(847) 754-1817
RICHARD ROBERTSON	REGIONAL SALES	OK, TX, LA	(281) 640-4314
MARK FRERICH	REGIONAL SALES	TN, AL, GA	(615) 705-0600
DARREN SEXTON	NEW ENGLAND GEAR SOURCING	ME, VT, NH, CT, MA, RI, NJ, DE	(508) 423-3139
JONATHAN SHOCKLEY	CUTTING TOOL SALES ENGINEER	MD, NJ, NY, PA, WV	(317) 384-5924

AUTOMOTIVE OEM SALES

TIM HAYDUK	AUTOMOTIVE SALES	GM TRANSMISSIONS	(586) 260-8948
RANDY HOOD	AUTOMOTIVE SALES	GM, CHRYSLER ENGINES	(248) 974-8260
BARRY ROBERTS	WALTER R. OLT CO.	FORD	(937) 477-5749
DAVE SOLEMANI	CUTTING TOOL ENGINEER		(317) 679-5721

ENGINEERING & SUPPORT

DON THOMPSON	GENERAL MANAGER	(586) 530-1905
MATT JONES	OPERATIONS DIRECTOR	(317) 362-5048
ADAM SHOCKLEY	PRODUCT MANAGER	(317) 667-8091
RICHARD STATEN	GEAR TOOL ENGINEER	(317) 657-3291
DAVID WONDERS	GEAR TOOL ENGINEER	(317) 535-3691
JIN ZHOU	GEAR TOOL ENGINEER	(248) 875-1858
JOHN ANGELES	CUTTING TOOL TECHNICIAN	(248) 910-2666

CUSTOMER SERVICE

 (317) 530-1004  ML-NAI.TOOLS@NACHI.COM

ENGINEERING SUPPORT

 ML-NAI.TOOLSENGINEER@NACHI.COM

NACHIAMERICA.COM